

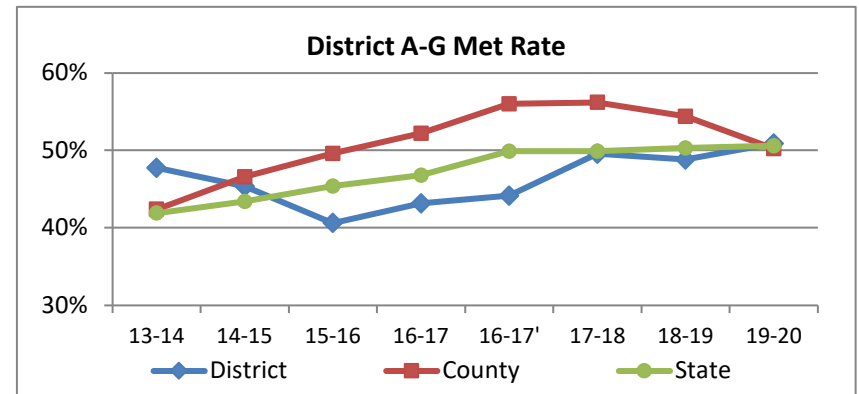
A-G Requirements Met Rate - Multi-Yr - District, School and Subgroup Reports

Pasadena Unified

Included all graduates up to 16-17, then recalculated in 16-17 and forward with only 4 year cohort graduates

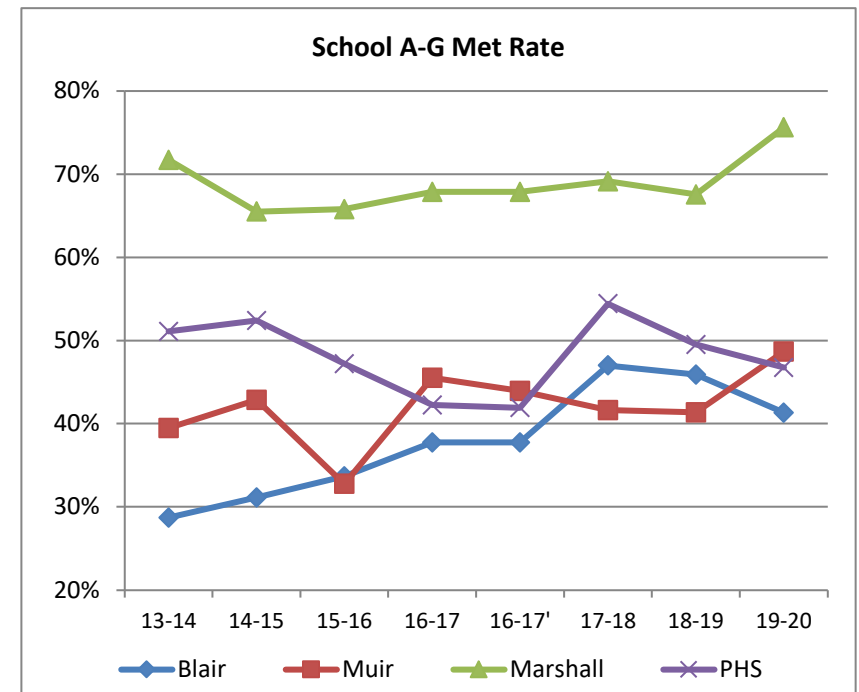
District Results

	13-14	14-15	15-16	16-17	16-17'	17-18	18-19	19-20
Number of Graduates	1129	1085	1103	1054	1031	1009	1067	908
Grads who met reqs.	539	492	448	455	455	500	521	462
% of Grads who met	47.7%	45.3%	40.6%	43.2%	44.1%	49.6%	48.8%	50.9%



School Results

	13-14	14-15	15-16	16-17	16-17'	17-18	18-19	19-20
Blair								
Number of Graduates	101	106	101	98	98	100	122	75
Grads who met reqs.	29	33	34	37	37	47	56	31
% of Grads who met	28.7%	31.1%	33.7%	37.8%	37.8%	47.0%	45.9%	41.3%
Muir								
Number of Graduates	228	182	177	167	173	173	203	152
Grads who met reqs.	90	78	58	76	76	72	84	74
% of Grads who met	39.5%	42.9%	32.8%	45.5%	43.9%	41.6%	41.4%	48.7%
Marshall								
Number of Graduates	237	232	225	246	246	201	256	238
Grads who met reqs.	170	152	148	167	167	139	173	180
% of Grads who met	71.7%	65.5%	65.8%	67.9%	67.9%	69.2%	67.6%	75.6%
PHS								
Number of Graduates	450	435	432	412	415	439	406	370
Grads who met reqs.	230	228	204	174	174	239	201	173
% of Grads who met	51.1%	52.4%	47.2%	42.2%	41.9%	54.4%	49.5%	46.8%



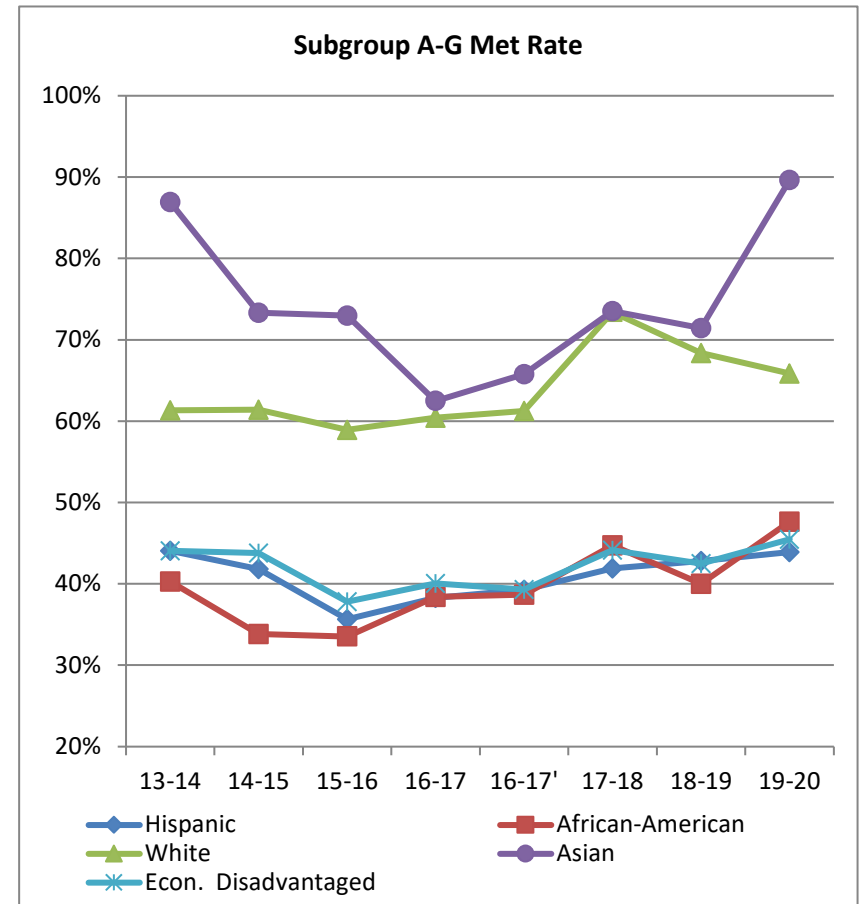
Graduates meet the A-G requirements (set by California State University and University of California systems) by taking the required courses and passing them with a C grade or better. The A-G rate is the number of graduates who met the requirements divided by the total number of graduates (see note at top of report).

A-G Requirements Met Rate - Multi-Yr - District, School and Subgroup Reports

Pasadena Unified

Included all graduates up to 16-17, then recalculated in 16-17 and forward with only 4 year cohort graduates

Subgroup Results	13-14	14-15	15-16	16-17	16-17'	17-18	18-19	19-20
<u>Hispanic</u>								
Number of Graduates	699	612	687	674	657	616	666	567
Grads who met reqs.	308	256	245	258	258	258	285	249
% of Grads who met	44.1%	41.8%	35.7%	38.3%	39.3%	41.9%	42.8%	43.9%
<u>African-American</u>								
Number of Graduates	201	207	161	138	137	161	145	128
Grads who met reqs.	81	70	54	53	53	72	58	61
% of Grads who met	40.3%	33.8%	33.5%	38.4%	38.7%	44.7%	40.0%	47.7%
<u>White</u>								
Number of Graduates	150	171	151	144	142	128	158	126
Grads who met reqs.	92	105	89	87	87	94	108	83
% of Grads who met	61.3%	61.4%	58.9%	60.4%	61.3%	73.4%	68.4%	65.9%
<u>Asian</u>								
Number of Graduates	23	30	37	40	38	34	35	29
Grads who met reqs.	20	22	27	25	25	25	25	26
% of Grads who met	87.0%	73.3%	73.0%	62.5%	65.8%	73.5%	71.4%	89.7%
<u>Econ. Disadvantaged</u>								
Number of Graduates	833	740	759	739	832	804	845	743
Grads who met reqs.	367	324	287	296	327	355	359	338
% of Grads who met	44.1%	43.8%	37.8%	40.1%	39.3%	44.2%	42.5%	45.5%



Graduates meet the A-G requirements (set by California State University and University of California systems) by taking the required courses and passing them with a C grade or better. The A-G rate is the number of graduates who met the requirements divided by the total number of graduates (see note at top of report).